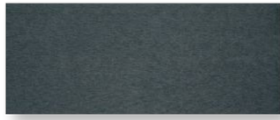


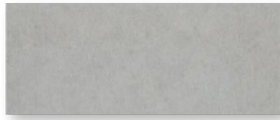
COVERINGS ETC

ECCO-CEM[®]

Spec Sheet



Coal Grey



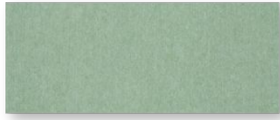
Natural Grey



Windsor Grey



Derby Grey



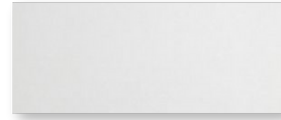
Celadon Green



Clove Brown



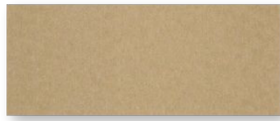
Deco Coral



Minimal White



Safari Brown



Tibet Gold

Overview

Emanate warmth in your surrounds with Eco-Cem® ideal for walls and facade. Eco-Cem® is a Future-Friendly™ material made of concrete strengthened with cellulose fibers offering a contemporary yet warm industrial look.

Contains both pre & post consumer recycled content; may help contribute toward LEED® credits with USGBC project certification.

Available Sizes

Sheets

120" x 48" x 5/8, 1/4", 1/2"

Tiles

16" x 16" x 1/2"

24" x 24" x 1/2"

48" x 48" or 48" x 24" x 1/4" and 1/2"

Finish

Honed

Specifications

Coefficient of Friction	ASTM C-1028	Dry: 0.95; Wet: 0.92
Modulus of Rupture	ASTM D-120	Dry: 1,800 psi; Wet: 800 psi
Shear Strength	ASTM D-732	Dry: 1,200 psi; Wet: 1,170 psi
Tensile Strength	ASTM D-209	Dry: 600 psi; Wet: 450 psi
Compressive Strength	ASTM C-170	Dry: 3,900 psi; Wet: 3,000 psi
Modulus of Elasticity	ASTM C-469	1,75 x 10 ⁶ psi
Water Vapor Permeance	ASTM C-96	6.5 perms
Thermal Conductivity (K)ity	ASTM C-58C-29/C	1.43 BTU-In/Hr F2.5 g/cm>
Flame Spread and Smoke	29M ASTM E-84C-127	Flame: 0 index Smoke: 0 index
Development Index		