

8/15

Kitchen & bath DESIGN NEWS[®]

The leading business, design and product resource for the kitchen & bath trade

Portfolio of Countertops | 38

COOL COUNTERTOPS SPORT HOT DESIGNS

Showroom Appeal | 32

Creativity Sets
Showrooms Apart

Fanciful Flooring

Today's tile trends for flooring are all about authentic looks – looks not resembling tile, per se, but rather wood and stone. Whether rustic and weather-worn or classic and elegant, the desire for porcelain and ceramic tiles that mimic natural elements is the main driver in the surging market.

Through the use of advanced technology such as digital imaging, tile can take on the look of a different material altogether. Aged wood, sophisticated marble and time-worn stone are all looks that are in high demand in today's kitchens and baths, but often, the real thing cannot stand up to the rigors presented by everyday life. Instead, designers are relying on ceramics and porcelains that provide the delicate looks while wearing like iron.

Safety also continues to be a concern for flooring – especially in wet areas of the home – and the latest crop of products takes all of that into account. Non-slip, long-wearing products are a given in this category, and those attributes are now paired with the most authentic looks to date.

On these two pages, *Kitchen & Bath Design News* looks at some of the latest tile flooring offerings on the market.

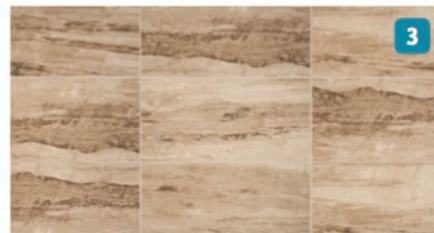
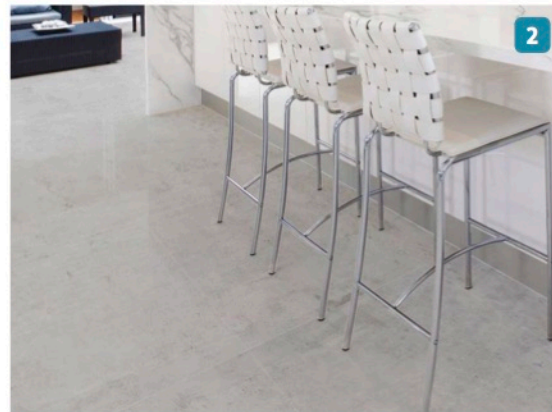
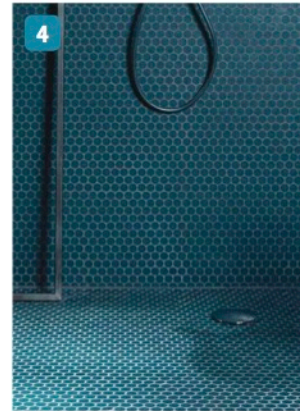
1. Armstrong Floor Products adds to its Alterna engineered stone flooring collection with five new designs: Whispered Essence and Regency Essence provide a concrete-infused collection that pairs gray tones with iridescent motifs; Enchanged Forest is a structured concrete look infused with a wood grain; Rossini Marble has veining found in marble underscored with warm beige; Urban Gallery mimics the linear texture of an organic fabric, and Artisan Forge provides the rustic look of weathered metal. Circle No. 212 on Product Card

2. From TheSize Surfaces, Neolith expands its Fusion product line with five patterns, including two granite-inspired shades. Using Neolith's Digital Design decoration injection technology to imprint rock-like features, the product line blends together natural elements with features innate to sintered compact surfaces, allowing it to be used for countertops, flooring, wall cladding and more. Available in 6- and 12-mm thicknesses and a 3200- by 1500-mm size format, the compact surface can be cut-to-measure. Circle No. 213 on Product Card

3. Daltile offers its River Marble to create a flowing visual impact, complete with veining and organic color palette to resemble marble. The porcelain tile is available in large-format tiles with a choice of matte or polished finishes. Five nature-inspired colors are offered in four plank and rectangular sizes that complement classic and contemporary styles. Circle No. 214 on Product Card

4. Made in Italy, the Industry Line from **Nemo Tile** comes in various shapes and sizes. Its Mosaico Rounds work for a shower floor, as its small surface area creates a slip-free ground that is durable and easy to clean, the company notes. Petrolio presents a change from the bright whites popular for bathrooms and is a glazed porcelain. Circle No. 215 on Product Card

5. American Olean Tile's Creekwood brings warm, natural tones and grain of wood to moisture-prone, high-traffic areas. The porcelain tile features linear graining, the look of small knots from Reveal Imaging and a pressed surface with wood-like undulations for even greater realism. Available in four colors, the tile has pressed edges that allow for minimal grout lines between the 6" by 36" planks. Circle No. 216 on Product Card

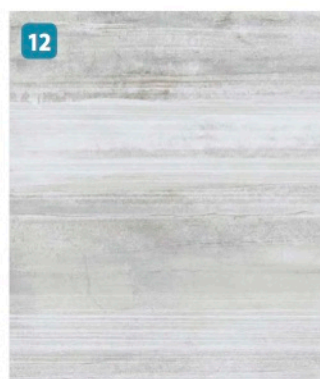
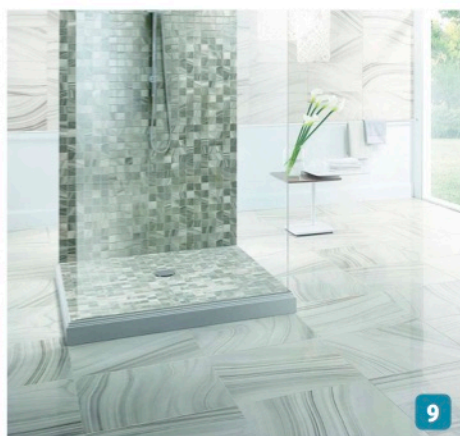
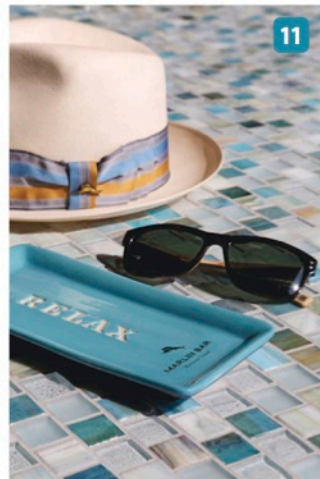
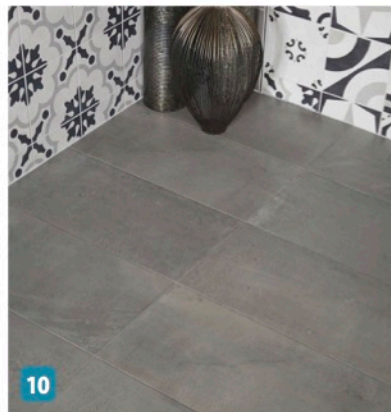
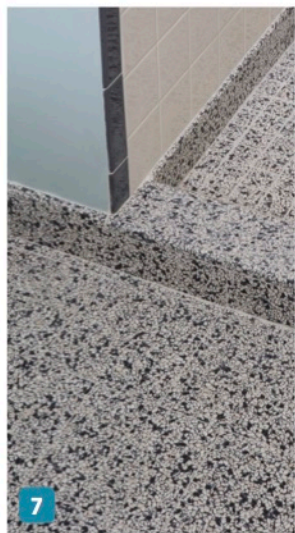


6. Designed to mimic the look and feel of crisp fabric surfaces, **Crossville's** Ready to Wear porcelain tile collection can be dressed up or down for any style. The line offers subtle texture in versatile colors and sizes and is an American-made product. Containing recycled content, the porcelain tile is Green Squared Certified. Circle No. 217 on Product Card

7. Offering a green alternative to poured Terrazzo, Eco-Terr flooring and countertops from **Coverings ETC** are made of recycled natural stone aggregates and come in both tile and slab formats. A non-porous finish prevents microbial growth and does not allow moisture to accumulate to help maintain a mold-free environment. With zero VOC materials, the flooring and countertops are available in a variety of contemporary colors and may help contribute towards LEED credits. Circle No. 218 on Product Card

8. Dekton by **Cosentino** brings its total offering to 23 colors with the introduction of eight new colors: Borea and Makai add on-trend wood looks; Keon evokes the color and texture of concrete; Kelya and Entzo expand the company's natural stone-inspired hues; and Ventus, Korus and Galema are solid hues designed to create statements in neutral palettes. The ultra-compact surface features UV resistance; high resistance to stains, abrasion and scratching; and low water absorption. Circle No. 219 on Product Card

9. Artistic Tile's Astra Porcelain Collection is inspired by the sinuous veining of agate and captures the natural beauty of semi-precious minerals. With light and dark bands flowing in natural waves across the surface, the porcelain avoids repetition for a natural appearance. The high-honed porcelain passed the DCOF AcuTest and may be used in wet or dry, indoor or outdoor spaces. Circle No. 220 on Product Card



10. Arizona Tile emulates a concrete appearance with its Find Series, providing a clean, modern look to spaces. The rectified color body porcelain requires minimal maintenance, according to the company.
Circle No. 221 on Product Card

11. Lunada Bay Tile has introduced its first-ever collaboration with Tommy Bahama, the island-inspired lifestyle brand, with an exclusive collection of Tommy Bahama-branded mosaic glass tiles. Tommy Bahama by Lunada Bay Tile will feature 10 unique color blends inspired by some of the world's most exotic locations, in six patterns: 1"x1" offset, 1"x2" brick, 1"x4" brick, 1/2"x4" brick, 1/2"x4" zig & zag and vineyard, which is made up of 1/2"x1/2" and 1"x2" tile sizes. Shown is Kangaroo Island.
Circle No. 222 on Product Card

12. The Rayas collection of high-definition porcelain tile from **Bellavita Tile** is produced using HD inkjet, with the result being a tile reminiscent of ancient Roman Travertine. Weathering and deliberate imperfections soften the sharp linear styling. Rayas is offered in modular 24"x24", 12"x12" and 8"x24" formats in full polish or matte in four soft colors: Clouds, Sands, Rains and Shadows.
Circle No. 223 on Product Card

13. Walker Zanger brings the look of vintage wood in a porcelain tile with the introduction of Nature. The plank-style porcelain tile collection is created using digital glazing to mimic the look and feel of grain-sawn wood. Nature is available in bold planks of 6" and 8" widths, each nearly 4' long, and is offered in White, Honey, Grey and Brown.
Circle No. 224 on Product Card

14. The geometric sequences in **Porcelanosa's** Barcelona Collection create floral designs, circular patterns and outlines of stars that can be used on floors and walls. Available in large-scale sizes – 23"x23" – to cover spaces easily, the tiles can be made from porcelain for flooring use or ceramic materials for use on walls.
Circle No. 225 on Product Card

15. Two new stone floor tiles – Siene and Visconte (shown) – have been introduced by **ANN SACKS**. Reminiscent of Old World French parquet flooring, the two tiles display the demarcations and well-worn beauty of centuries-old traveled stones. Hand-cut, Siene and Visconte are hand-worked and hand-finished to achieve the Old World, honed appeal of antique flooring. Visconte is crafted from white marble, with intense and varied gray-green veining. It is available in an 8"x46" picket field, a 7" triangle, and an 8"x27" trapezoid.
Circle No. 226 on Product Card

16. MS International fashions Palmetto from the latest in high-definition ink jet technology, providing an intricately natural wood look in porcelain. The series is inspired by the rich colors of genuine wood floors, and features two gray colors and three authentic colors.
Circle No. 227 on Product Card

17. The allure of aged French limestone inspires Summerville large-format porcelain tile by **Marazzi**. Created using the latest 3-D technology, the colors and veining emulate a weathered appearance while the softly worn surface and rustic chiseled edges combine to suggest natural wear from centuries of footsteps. Innumerable combinations can be created with ivory, beige and gray. The porcelain tile is offered in three large format sizes: 20"x20", 12"x24" and 18"x36", plus mosaics in 1"x4" herringbone and 2"x2" formats.
Circle No. 228 on Product Card