

COUNTERTOPSSM & ARCHITECTURAL SURFACES

THE OFFICIAL PUBLICATION OF THE INTERNATIONAL SURFACE FABRICATORS ASSOCIATION

VOLUME 4 • ISSUE 1 • 2011 • SINGLE ISSUE \$14.95

What's Inside:


Outlook 2011

What's in Store for the Surfacing Industry
Page 30

The 5 Biggest Business Blind Spots
Page 40

Inside a NIOSH Inspection of a Cultured
Marble Facility
Page 48

A Who's Who of Sustainable
Surfacing Materials
Page 44



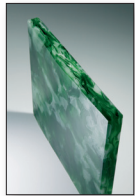
A Hot Project with a Cool Design

Page 26

decorative elements; and industrial furnace residuals from factories in the form of crystallized ashes. The recycled content is then mixed with 25 percent natural material including: stone scrap from mountains, quarries, manufacturing and fabrication; and is bonded together with a proprietary eco-friendly resin made in part by corn oil.

It is available in two color palettes - the Revive collection and the Green collection - totaling 10 individual designer colors, suitable for both commercial and residential projects. It is also available in both a polished and a matte Leather Texture finish. It is available in jumbo slabs of 63 by 128 in. and standard tile sizes of 12 by 12 in., 18 by 18 in. and 24 by 24 in. The jumbo slabs allow for a higher square footage of material per container, therefore minimizing the product's carbon foot print, and provide a higher yield of material during fabrication, minimizing seams and waste. The slabs are available in 1.2cm, 2cm and 3cm thickness to respond to varying market needs. ECO is GREENGUARD certified for low chemical emissions and offers points toward LEED certification. *Circle Reader Service #13 on the Reader Service Page or go to www.isfanow.org/info.*

Coverings Etc. Bioglass



Bio-Glass from Coverings Etc. is a "future friendly" material made of 100 percent recycled and recyclable glass with no colorants or additives. It has cradle-to-cradle Silver Tier third party certification and may help

contribute toward LEED credits with USGBC project certification. Sheets are available in 110 by 50 by 3/4 in. and weigh 470 lbs. without crating. They are suitable for countertops, worktops, interior flooring and walls. Bio Glass has a multidimensional appearance and its coloring varies with direct and indirect light. All the colors are made of 100 percent post-consumer recycled content. It has a matte finish. Fabrication of the material is similar to that of natural stone. *Circle Reader Service #14 on the Reader Service Page or go to www.isfanow.org/info.*

DuPont Corian and Zodiac Terra Collection



DuPont Corian includes the Terra Collection, which has been certified by SCS to contain 27 shades of

solid surface made with pre-consumer recycled content. Seven of the colors have a minimum of 13 percent recycled content and 20 have a minimum of 6 percent.

The Zodiac Terra Collection has 8 colors with a minimum of 25 percent post-consumer recycled content: Licorice, Wintergreen, Coriander, Moroccan Morning, Mossy Green, Calm Springs, Warm Taupe and Flax. Zodiac quartz surfacing is also GREENGUARD Indoor Air Quality Certified and has received the GREENGUARD for Children & Schools Certification. *Circle Reader Service #15 on the Reader Service Page or go to www.isfanow.org/info.*

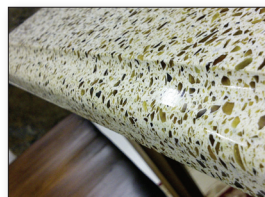
EnviroGLAS Recycled Glass, Porcelain Surfacing Products



EnviroGLAS offers a variety of post-use recycled glass and porcelain products for decorative and

practical use. New among the company's offerings is EnviroMODE, a new terrazzo surface made from recycled sinks and toilets. Designed for easy maintenance and durability, the product is eco-friendly and beautiful. It is available in an unlimited range of non-voc epoxy resin colors, including neutral and earth-toned resins, as well as bold colors. The patented application also offers EnviroSLAB countertop slabs and EnviroPLANK floor tiles, which are made with 80 percent recycled glass and/or porcelain and 20 percent non-VOC colored epoxy resin. EnviroSLABS measure 27 in. by 84 in. by 1 in. thick or 60 in. by 84 in. by 1 in. thick. EnviroPLANK recycled glass and porcelain Terrazzo floor tiles are 1/2 in. thick and come in three sizes: 6 in. by 36 in.; 12 in. by 36 in.; and 24 in. by 36 in. Shower walls measure 60 in. by 72 in. *Circle Reader Service #16 on the Reader Service Page or go to www.isfanow.org/info.*

Eos Surfaces Geos Recycled Glass Surfacing



Eos Surfaces offers Geos, which is a hard surface made from a combination of recycled glass, quartz and resin. With a carefully chosen mixture of both post-consumer and industrial use glass, GEOS gives new life to a cast-off

resource. The material is designed to fabricate like quartz surfacing, and is comprised of a minimum of 50 percent recycled glass, quartz as a filler material and a resin binder. Projects in Geos can currently qualify for 4 LEED points, but additional certifications are in the works. The material is initially available in 10 colors. *Circle Reader Service #17 on the Reader Service Page or go to www.isfanow.org/info.*

Hanwha Surfaces Hanex Solid Surface, Hanstone Quartz Surfacing



Hanwha Surfaces Hanstone quartz surfacing includes five colors that have pre-consumer recycled content:

Genesis has a minimum of 20 percent pre-consumer recycled glass content, and Specchio White, Passion Rouge, Mystic Blue and Obsidian Black all have a minimum of 24 percent pre-consumer recycled mirror content.

The company's Hanex solid surface includes six colors that have pre-consumer recycled content: Honey Wheat, Mist and Stone Hedge all have a minimum of 3 percent pre-consumer recycled chip content; Havana Sand and Desert Castle both have a minimum of 8 percent pre-consumer recycled chip content; and Terra Sienna has a minimum of 10 percent pre-consumer recycled chip content. *Circle Reader Service #18 on the Reader Service Page or go to www.isfanow.org/info.*

IceStone Recycled Glass, Cement Material



IceStone manufactures its products with 100 percent recycled glass in a cement matrix, diverting

hundreds of tons of glass from landfills each year. IceStone has a recycled content of approximately 75 percent of the product by weight. Of the recycled content, the majority is pre-consumer/post-industrial waste with the balance being post-consumer waste.

The material is available in 21 colors, and the company has received Cradle to Cradle™ Gold certification, which is given out by McDonough Braungart Design Chemistry (MBDC). Cradle to Cradle assesses products on a number of