

THE PRODUCT PUBLICATION OF THE U.S. ARCHITECTURAL MARKET

Architectural PRODUCTS

JAN-FEB 2012

PROJECT DECONSTRUCTION

Historic Salem Jail, Salem Mass.

MARKET OF CHOICE

U.S. Embassies Bring American Companies Abroad

TREND LINES

The Greatest in Glazing

ACHIEVING LEED

A certain haze surrounds the notion of sustainable design, but this feature demystifies the concept by breaking down the products and systems employed to earn specific LEED points. This installment highlights the creative use of concrete.



California Dept. of Health Services, Richmond, Ca.

Rebuild
retrofit & renovation

18 Countdown to Zero: Solar

COVER-UP

The modesty of the 1900s was not in its flooring. Eco-Terr RETRO from Coverings Etc offers highly pronounced decorative geometric patterns that have their roots in the Art Nouveau era. Tiles are available in a wide range of designs and motifs, including Mediterranean, Cuban and Art Deco, to name a few. Eco-Terr RETRO also allows customizable patterns. The terrazzo alternative contains 70% pre-consumer recycled material derived from marble, granite and stone chip byproducts of the manufacturing process. Visit www.coveringsetc.com or Circle 484



Tile patterns reflect early 20th century design

LIGHT IT UP

A new, thinner, light-guiding continuous cast acrylic sheet from Lucite Lux is available in its Illumination series. The 0.236-mm sheet is made for LED-lighted retail shelving and other applications where illumination is a key design factor. Visit www.lucitelux.com or Circle 482



METL-SPAN POP QUIZ

WHICH OF THESE WALL LAYERS DOES THE HPCI BARRIER™ REPLACE?

- A. AIR
- B. WATER
- C. THERMAL
- D. VAPOR
- E. ALL OF THE ABOVE

At Metl-Span, we understand that sometimes the real hero is behind the scenes. Introducing the HPCI Barrier™ — a high-performance wall panel that replaces air, water, thermal and vapor layers with a single insulated metal panel that does it all. With no thermal bridges, it can be used behind any type of facade for greater design flexibility. The HPCI Barrier provides a continuous layer of 4-in-1 performance that will move your next project faster. And by closing and insulating faster, you can start the interior work sooner — even before the final exterior facade is installed. Call 877-585-9969 or visit our website for more information.

PIONEERING INSULATED METAL PANEL TECHNOLOGY

METL SPAN
A BlueScope Steel Company

METLSPAN.COM

ENVIRONMENTALLY CONNECTED

METAL INITIATIVE

METL-11-034 ©2011 Metl-Span LLC - A BlueScope Steel Company. All rights reserved.

BEWARE OF IMPOSTERS POSING AS GREEN PRODUCTS

Go Green!
and Red, White & Blue too!

Our American company was founded on creating products from recycled materials. Foreign competitors are now selling counterfeit QuietWalk®. Please don't be fooled by poor quality look-alikes! We hold U.S. patents on our product and how it's made. Over 23,000 acres of QuietWalk® have been installed for thousands of satisfied customers.

Our products are certified by Scientific Certification Systems (SCS) for recycled content, and as a contributor to clean indoor air. Furthermore, we treat our fiber underlayments with Aegis antimicrobial which does not bleed harmful toxins into the environment.

Triclosan Free!

Look for GENUINE QuietWalk®, accept NO SUBSTITUTES!

QuietWalk®
Floating Floor Underlayment

SCS-IAQ-01499, SCS-MC-01554

SCS CERTIFIED INDOOR ADVANTAGE GOLD

SCS CERTIFIED Minimum 94% Recycled Content

MP global products, LLC

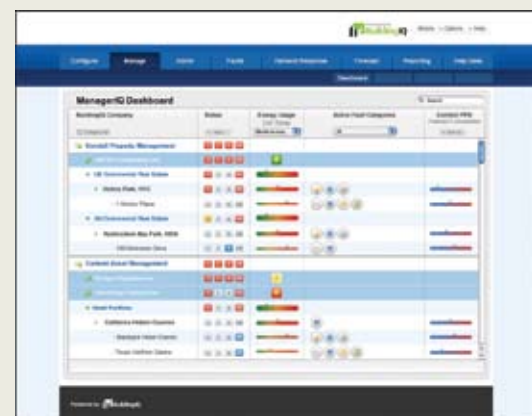
Your SUSTAINABLE Underlayment Specialists

888.379.9695 • quietwalk.com

Learn about Triclosan concerns

Circle 53

Optimizing energy performance remotely



HIGH IQ

ManagerIQ enables the remote configuration, monitoring and management of BuildingIQ's suite of SaaS Predictive Energy Optimization applications for facilities and campuses. Modules of the software application include Management Console, Configuration, Administration and Helpdesk. The Configuration module workflow streamlines the work of mapping and validating data and control points between building automation systems and BuildingIQ. Further, it streamlines data entry for establishing and maintaining complex utility tariffs and operating schedules, which, in turn, inform BuildingIQ's optimization models and algorithms. Visit www.buildingiq.com or Circle 483